



69 Freshfield Road

Formby, L37 7BG

£725,000

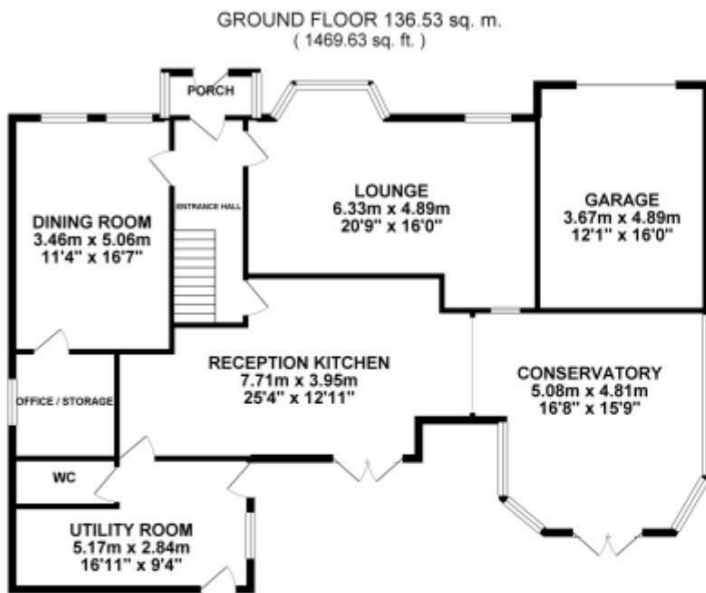
 4  2  2  E



69 Freshfield Road

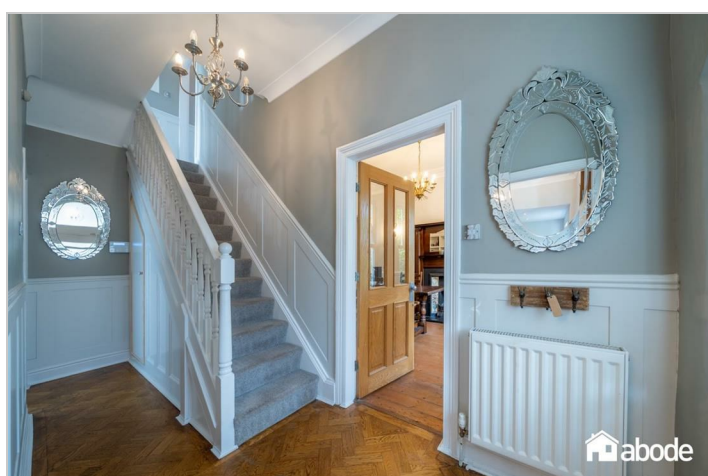
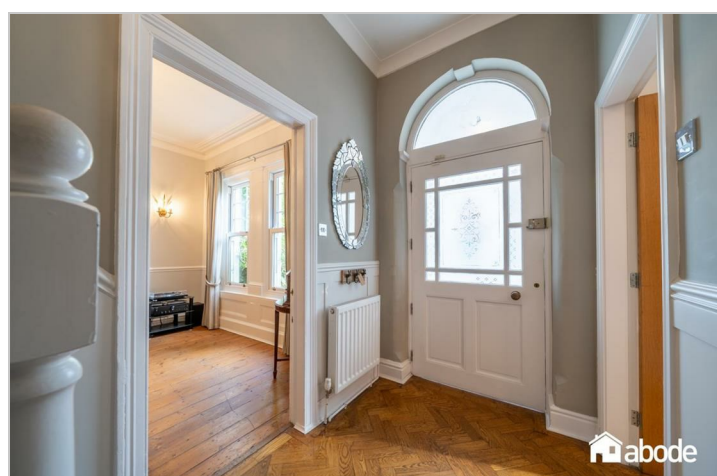
Formby, L37 7BG

£725,000



TOTAL FLOOR AREA : 212.45 sq. m. (2286.75 sq. ft.) approx.

Whilst every attempt has been made to ensure the accuracy of the floorplan contained here, measurements of doors, windows, rooms and any other items are approximate and no responsibility is taken for any error, omission or mis-statement. This plan is for illustrative purposes only and should be used as such by any prospective purchaser. The services, systems and appliances shown have not been tested and no guarantee as to their operability or efficiency can be given.
Made with Metropix ©2025



Road Map



Hybrid Map



Terrain Map



- **ELEGANT VICTORIAN DOUBLE- FRONTED DETACHED RESIDENCE**
- **SOUGHT-AFTER LEAFY FORMBY LOCATION, JUST A SHORT STROLL FROM THE VILLAGE**
- **CHARMING PERIOD FAÇADE WITH BEAUTIFUL CURB APPEAL**
- **WELCOMING ENTRANCE HALL WITH ORIGINAL OAK PARQUET FLOORING**
- **ELEGANT LOUNGE AND FORMAL DINING ROOM IDEAL FOR ENTERTAINING**
- **KITCHEN AND BREAKFAST ROOM LEADING TO A LIGHT-FILLED CONSERVATORY**
- **FOUR SPACIOUS BEDROOMS, INCLUDING AN EXTENDED MAIN SUITE**
- **AMPLE OFF-ROAD PARKING AND GARAGE**
- **PRIVATE WEST-FACING REAR GARDEN WITH MATURE PLANTING**
- **TENURE FREEHOLD - COUNCIL TAX BAND G**

Viewing

Please contact our Formby Office on 01704827402 if you wish to arrange a viewing appointment for this property or require further information.

These particulars, whilst believed to be accurate are set out as a general outline only for guidance and do not constitute any part of an offer or contract. Intending purchasers should not rely on them as statements of representation of fact, but must satisfy themselves by inspection or otherwise as to their accuracy. No person in this firm's employment has the authority to make or give any representation or warranty in respect of the property.

Energy Efficiency Graph

